

1 Teaching

Lesson study (in some format - covid restrictions considered)

During first two weeks of term

- Assessment of reading by class teachers 1:1
- RWI assessment
- Maths meeting assessment

Maximise impact of RWI scheme through training and staff development

Skills/dispositions for learning focus through e.g. CLPE

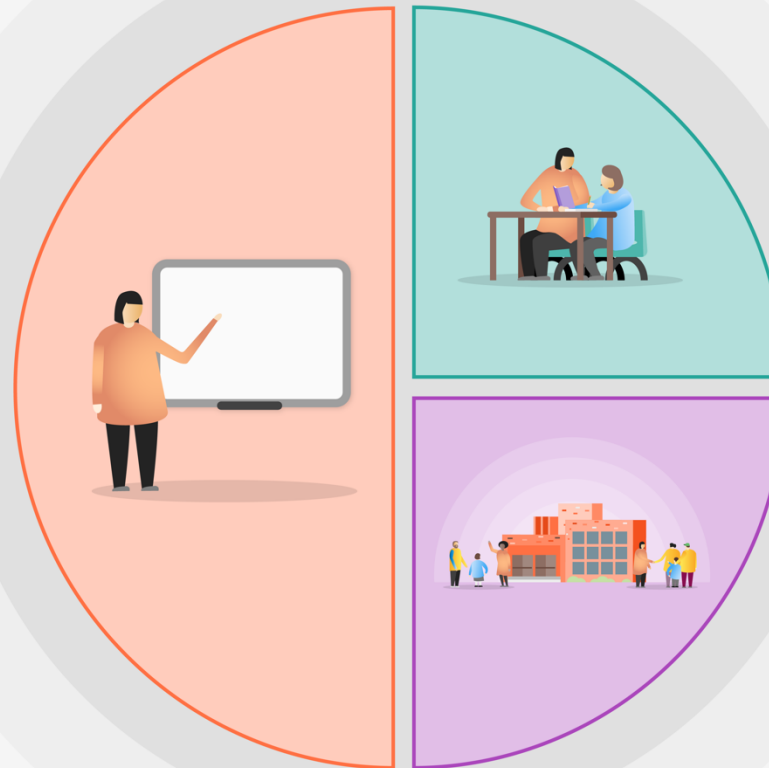
Professional Growth programme for all staff incorporating

- SWAN
- Maths catch up
- AFL
- Behaviour for Learning
- Curriculum development

Effective use of Cornerstones curriculum to ensure high quality

Seesaw/google classroom development to support blended online learning.

Development through CPD, using "Rosenshine's Principles in Action" book and workbook alongside "Walkthrus



2 Targeted academic support

Academic mentors

Tutoring (possible use of teacher returning from maternity leave spring 21).

Interventions to include;

- Maths Bank
- BRP
- RWI
- THRIVE 1:1
- ELSA
- NELI (early years)

Devices and wifi hotspots

3 Wider strategies

Digital strategy and remote learning (Seesaw)

Improve levels of attendance

SWAN

Behaviour for learning – addressing low level behaviour

Cornerstones - breadth and depth of curriculum maintained – tracking coverage and plan to revisit areas affected during lock down